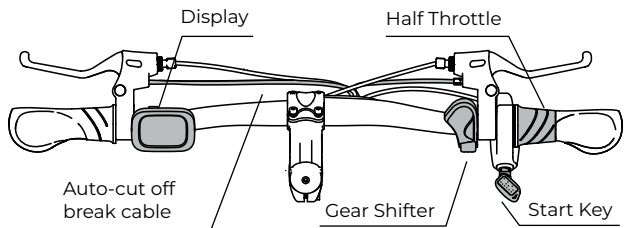
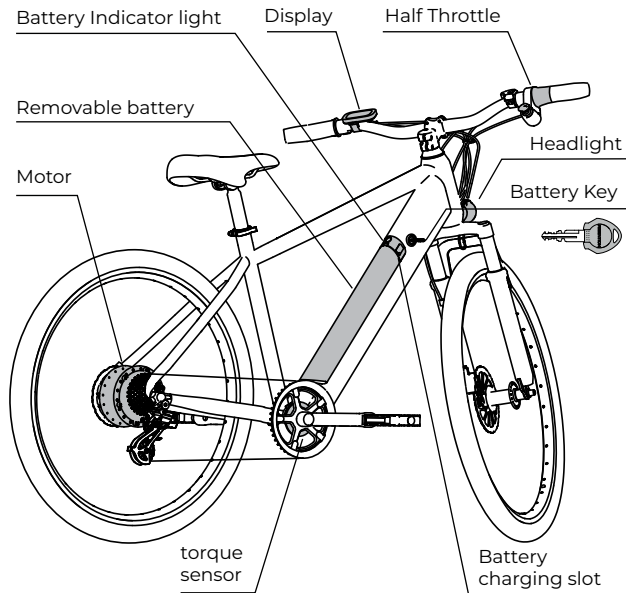




***MERAKI ULTRA***  
***QUICK START GUIDE***



# KNOW YOUR MERAKI ULTRA



Maximum rider weight **110 Kg**

Maximum total load **140 Kg**

Maximum rated speed **25 Kph**

Water resistance rating **IP65**

Battery Voltage **36 V**

Battery Type **Li-ion**

Battery Capacity **9.6 Ah**

Battery range **50 Km**

Charger Voltage **42V DC**

Charging Socket **5A/220V**

Charging Time **4.5-5Hr**

Motor **250W BLDC**

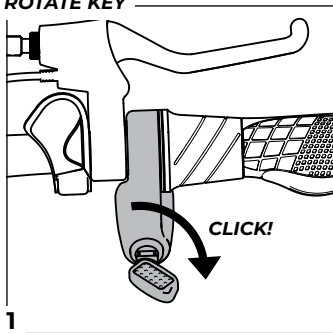
\*62 Km at PAS 1, 55 Km at PAS 2,  
50Km at PAS 3, 40 Km at PAS 5,  
<30 Km with throttle

## WARRANTY

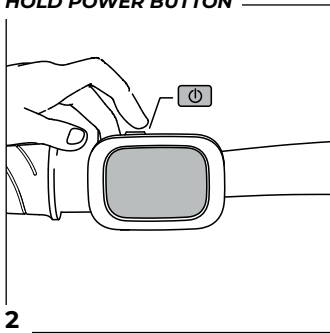
Motor and Battery **2 yrs**  
 Electronic components **1 yr**  
 Non Electronic components **6 mos**  
 Frame **5 yrs**  
 No warranty on wear and tear

# START

## ROTATE KEY



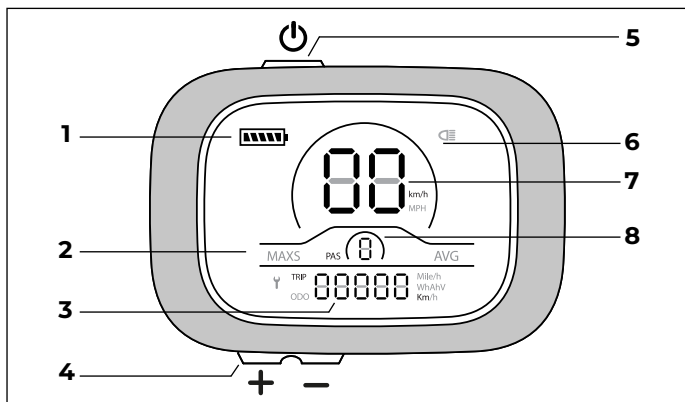
## HOLD POWER BUTTON



1. Turn the start key clockwise till you hear a click
2. Press and hold power button for two seconds to turn on display.

To turn off bike, turn key counter-clockwise till you hear a 'click'.

# DISPLAY GUIDE

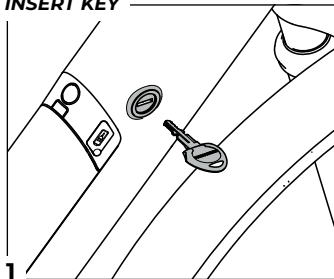


1. Battery Level
2. Maximum speed Indicator
3. Trip distance \*
4. Plus/Minus buttons for PAS
5. Power Button
6. Headlight Indicator
7. Real Time speed \*
8. PAS (Pedal Assist level)

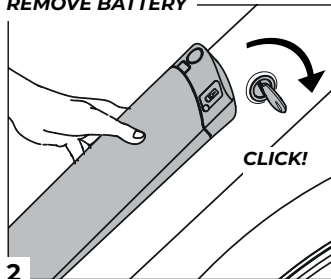
\* Press power button to switch between trip distance (km), ODO (km), maximum speed (km/h) and average speed (km/h). After the display is turned on, it will show the real-time speed (km/h) and the trip distance (km) by default.

# CHARGE

## INSERT KEY



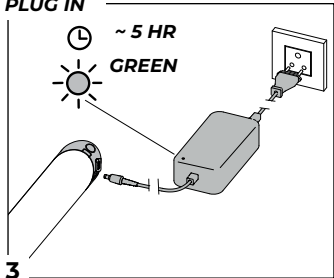
## REMOVE BATTERY



**1.** Insert 'REINTION' key in the frame keyhole

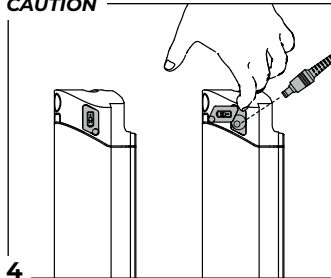
**2.** Rotate key counterclockwise till it 'clicks'. The battery will pop out.

## PLUG IN



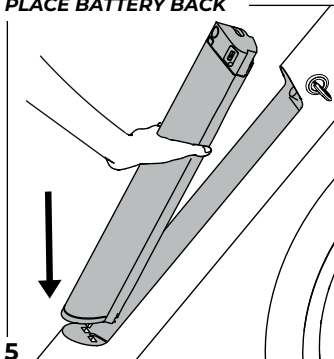
**3.** First plug the charger in the socket. Then plug the charging pin in the charging hole in the top-right of the battery. Charge till charger light is green. Full charge will take approximately 4 hours and 45 minutes.

## CAUTION

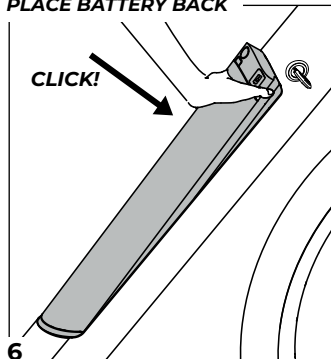


**4.** Slide the dustcap off the battery only during charging. Keep it on at all other times.

## PLACE BATTERY BACK

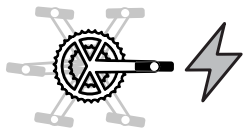


## PLACE BATTERY BACK



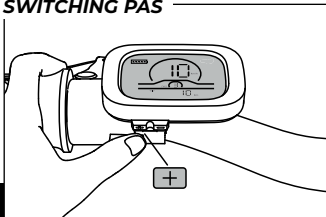
**5.** After charging is complete, Place the base of the battery at the bottom of the battery slot.

**6.** Press down on the top of the battery till it 'clicks' to secure the battery in place.



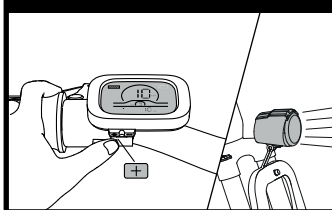
## PEDAL WITH MOTOR ASSIST

### SWITCHING PAS



Once display is on, increase or decrease pedal assistance as per need, from 1 to 5.

### ITS DARK- TURN HEADLIGHT ON

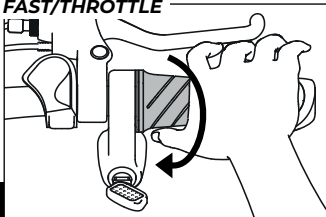


Long press "+" button to turn headlight on



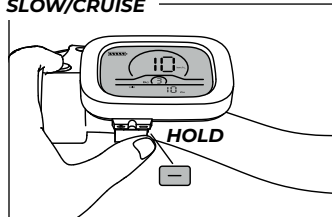
## RIDE WITHOUT PEDALLING

### FAST/THROTTLE



Make sure PAS is more than 0. Rotate the half throttle on the right handlebar grip.

### SLOW/CRUISE

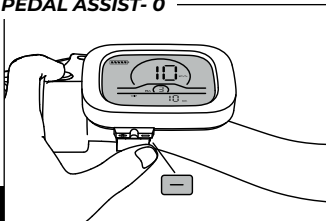


Press and hold "-" button to cruise at a constant speed



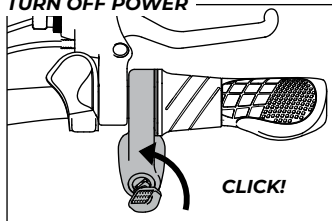
## PEDAL WITHOUT MOTOR ASSIST

### PEDAL ASSIST- 0



Reduce PAS TO "0". You can still use the display .

### TURN OFF POWER



Alternatively, rotate key counter clockwise to turn off bike.

# USEFUL LINKS

## REGISTER YOUR BIKE

[www.outdoors91.com/  
register-my-bikew](http://www.outdoors91.com/register-my-bikew)



Register your bike to activate warranty

**Register within 30 days of date of purchase**

## ASSEMBLY VIDEO

[https://www.youtube.com/  
watch?v=A0sH1xvflc4&t=24s](https://www.youtube.com/watch?v=A0sH1xvflc4&t=24s)



Follow the step-by-step assembly video to assemble your E-bike on your own at home

## WARRANTY DETAILS

[www.outdoors91.com/warranty-details](http://www.outdoors91.com/warranty-details)



Find detailed warranty information here

## RESOLVE TECHNICAL ISSUES: 91WIZ

[www.outdoors91.com/91wiz](http://www.outdoors91.com/91wiz)



Virtually connect with our trained technicians resolve any issue Immediately

## BOOK DOORSTEP ASSEMBLY: 91CARES

Call our technician at your doorstep for assembling your bike, by call or Email

 **1800 572 9191**  
 **cares@outdoors91.com**

## DOS AND DON'TS



Always wear a helmet while riding.



It is okay to ride your Meraki ultra in light rain. Make sure Battery pin cap is covering the pin.



If the battery gets wet while removing, wait for it to dry before charging. Also, make sure battery cavity is dry before re-inserting battery.



Charge the battery immediately if battery symbol outline is blinking.



Plug in charger in AC/mains socket before plugging it into the battery.



Charge the battery at least once in a month if Meraki Ultra is not being used.



Inflate your tyre once every two weeks, or after 150km of riding, whichever is first.



You can charge the battery without removing from the bike, but make sure it remains in a shaded and dry place.



Do not charge the battery when ambient temperature is above 45°C



Do not tamper with electrical components and wire connectors on your own, as warranty on components will be void.



Do not ride in heavy rain and waterlogged conditions.



Avoid using throttle when battery level is low, to increase range (distance you can ride with pedal assist).



Do not use throttle when starting E-bike from stationery position.



Do not leave the battery on charge overnight, or for longer than 8 hours.



Do not use any other charger to charge your Meraki Ultra.



Do not operate the motor when battery is charging and attached to Meraki Ultra.



Do not weld anything to the frame.

# FREQUENTLY ASKED QUESTIONS

## ***Is Meraki Ultra similar to a motor bike?***

No, this is a hybrid use electric vehicle. You can use it as 1) a push pedal bicycle 2) Pedal with motor assistance 3) Cruise slowly without pedalling 4) Accelerate using throttle without pedalling. Using throttle frequently or for long duration will drain out battery faster and reduce range. ***Ride it in your most preferred pedal assistance mode.***

## ***Does it get charged while pedalling?***

No, the battery is charged only when it is charged through a power socket using the given charger.

## ***Does throttle have power levels?***

No, throttle overrides any PAS Mode. Power will depend on how much it is rotated, like a motorbike.

## ***How fast can I go on Meraki Ultra?***

The power will cut off once you reach 25 Kph. However, you can go faster by pedalling harder, and speed will reflect on display.

## ***Are these tyres tubeless?***

No. The tyres come with tubes. They are 60 TPI tyres especially designed for use with E-bikes.

## ***How much each charge cost?***

One full charge is 0.6 Units. It will cost Rs 4-5 (subject to tariff rates in your city)

## ***What is the true range of Meraki Ultra?***

The range of 50 Km is calculated at PAS level 3 on a flat road. It will increase or decrease based on your weight, road inclination, PAS level used, and frequency of throttle used.

## ***Can I weld/attach a rear carrier to Meraki Ultra to carry load?***

You can bolt a carrier to the frame. Total weight including the rider, carrier and cargo should not exceed 140 Kg, if such a carrier is bolted.

Welding is not recommended as it will affect the functioning of electrical components inside the frame. Welding anything to the frame will render frame warranty void.

## ***What is the charging time?***

Meraki Ultra battery takes around 4.5- 5 hours to charge. For a full charge, wait for the light on the charger to turn green before disconnecting the charger.

## ***My battery is overheating. What should I do?***

Do not charge the battery with ambient temperature over 45°C. Otherwise, it is normal for battery and charger to heat to 60-70°C during charging. The battery has temperature cut off for safety.

## ***How long will the battery last?***

It should last around 2000 charging cycles or 2-4 years depending on usage, after which it can be replaced at cost.