



TO REGISTER AND ACTIVATE THE
WARRANTY FOR YOUR E-BIKE

E⁺91

E-Bike Assembly Guide for All External Battery Models



BASIC PARTS

91



01



HANDLE BAR INSTALLATION

- 1) Rest the bike on the rear wheel and fork.
- 2) Loosen steerer clamp bolt and adjust direction of stem to front of cycle.
- 3) Remove handle bar clamp bolt and fit the handle bar on the stem and tighten the bolts.
- 4) Ensure that handle bar is in the center aligned with the stem
- 5) Make the brakes levers parallel to handle bar and the tighten the nut on the brake lever. Do this for both brake levers.
- 5) Install the front reflector on top of the arch of front suspension

Tip: Adjust the handlebar angle so your hands are slightly bend when riding)



CONNECTORS

All connectors are pre-connected. If the bike doesn't start, please double-check the wiring and ensure the arrows on the connectors are aligned correctly.



FRONT TIRE

- 1) Insert the front wheel into the dropout and ensure the rotor of disc fits into the gap of brake pads.
- 2) Insert the quick release into the axel and tighten the nut.
- 3) Check with lever for tension. Once resistance is met half way close the lever.

***Tip:** A fully tightened nut will be leave impression on your hand when closing the lever.



SEAT POST AND SADDLE

- 1) See the direction arrow for the end that goes inside the seat post.
- 2) Install the rear reflector (Red) on the top most position of the seat tube, this will give you full access of the seat tube.
- 3) Insert the seat post inside the seat tube beyond the minimum insertion mark
- 4) The seat post clamp will be attached to the frame Tighten the clamp by rotating it clockwise and lock it using the lever.
- 5) Put the saddle on top of the seat post and align it to the top tube and tighten the bolt

*Tip: When tight enough the saddle won't move with your hands.



PEDALS

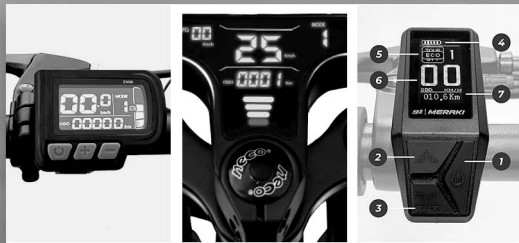
- 1) Fitting the pedals is very simple but requires attention.
- 2) Left and the right pedal are marked with L (Left - opposite side of chain) and R (Right - the chain side).
- 3) Correct pedal should inserted in the correct crank.
- 4) Use Allen Key to tighten the pedals.
- 5) The Right pedal tightens clockwise direction and the left pedal tightens in anti-clockwise direction.



START & STOP

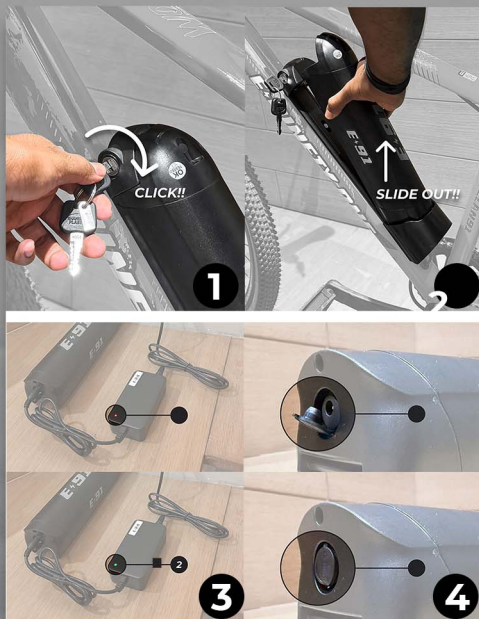
- 1) Turn the start key clockwise till you hear a click.
- 2) Press and hold power button of display for two seconds to turn on display.

To turn off bike, turn key counter-clockwise till you hear a 'click'.



DISPLAYS TYPES

- 1) Power Button
- 2) Pedal Assist Mode Up
- 3) Pedal Assist Mode Down
- 4) Battery Level Indicator
- 5) Speed Mode
- 6) Real Time Speed
- 7) Total Distance and Duration



CHARGE

Place the e-bike in a cool, dry, and shaded location near a charging socket.

- 1) Remove the battery by unlocking it with the key and gently sliding it out.
- 2) Plug the charger into the socket first, then connect the charging pin to the charging port on the battery.
- 3) Charge the battery until the charger light turns green.

CAUTION

- 4) Slide the dust cap off the charging port only during charging. Keep it securely closed at all other times to protect the port.

NINETY ONE

ENGINEERED FOR MORE

CONNECT WITH US ON INSTAGRAM & YOUTUBE BY TAGGING US
IN YOUR BIKE IMAGES. DON'T FORGET TO USE #CLAN91

